

16.07.04
EASY



'Semco'
COTTON
GEOMETRIC
X-STITCH

WHAT YOU'LL NEED

- 40cm x 40cm Semco white linen (32 ct)
- Semco embroidery threads
- Embroidery needle
- Semco wooden embroidery hoop (20cm/8")
- 30cm square Prima Homespun
- White sewing thread and needle
- Scissors

STEP 1

Insert the linen into the embroidery hoop, and begin stitching following the graph using cross-stitch in desired colours.

STEP 2

When the stitching is complete, remove the linen from the hoop. Press and trim linen back to a 30cm square with the stitched design in the centre.

STEP 3

Place the linen right side up on the white homespun square. Holding the linen and homespun together place back into the hoop ensuring both are pulled taut. Turn hoop over and trim back the linen and homespun, leaving a 5cm overhang all around the hoop.

STEP 4

Using white thread do a running stitch through both the linen and homespun together 2cm from the edge to pull the fabrics in at the back. Tie it off with a knot to keep the fabric sitting nicely inside the hoop.

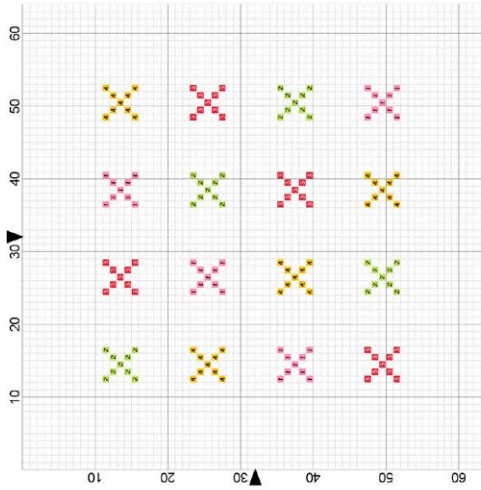
CROSSES

1 S 0103
36 STITCHES
1 SKEINS

2 S 0220
36 STITCHES
1 SKEINS

3 S 0026
36 STITCHES
1 SKEINS

4 S 0266
36 STITCHES
1 SKEINS



GRID SIZE: 64 W X 64 H
DESIGN AREA: 2.56" X 2.56" (41 X 41 STITCHES)