

SPOTLIGHT

QUILTED LOLLY CUSHIONS

N° 08.19.08
PROJECT SHEET



**SHOW US WHAT
YOU'RE MAKING**

 /spotlightstores

 @spotlightstores

PEPPERMINT SWIRL CUSHION

e EASY

WHAT YOU'LL NEED (PER CUSHION)

- 5m of 112cm wide printed cotton fabric - 'Bright Christmas' Candy Cane
- 5m of 112cm wide plain cotton fabric - White
- 2x white buttons
- 25 of large black ric rac trim
- Scraps of white & black cotton fabric pieces
- Hobby fill polyester stuffing
- Vliesofix
- Scissors, pins, tape measure/ruler, pencil, hand & doll needle
- Matching sewing threads
- Sewing machine
- Iron, pressing cloth or tea towel

INSTRUCTIONS:

Step 1 - From template provided, cut 10x pieces from printed Christmas fabric and 10x pieces from plain white cotton fabric.

Step 2 - With right sides facing, place one printed and one plain fabric pieces together. Sew together along one side along stitching as shown on template stopping stitching at the point. Clip curve seam and press seam towards printed fabric. With right sides together sew another printed piece of fabric to the other side of the plain fabric in same manner. Continue sewing alternative fabric pieces together until one side of the cushion is completed with 10 pieces of fabric all joined together. Clip excess fabric away from points.

Repeat with remaining pieces to complete the other side of the cushion.

Step 3 - To make eyes, fuse Vliesofix to the back of same scraps of black and white cotton fabric. Using template provided, trace 2x large circle onto the back of white fabric and 2x small circle onto the back of the black fabric. Cut all circles out.

Peel paper backing from the black circles and place wrong side of black circles onto the front of the white circles in desired position. Using an iron fuse the black circles on top of the white circles.

Peel paper backing from white circles and place eyes wrong side down onto the right side of one of the cushion pieces in desired location. Iron to fuse eyes in place onto fabric. To further secure, topstitch around the edges of both the white and black fabric circles.

Place black ric rac trim below the eyes on the cushion front in desired location, top stitch trim in place to create a mouth.

Step 4 -With right sides facing pin the two cushion fabric pieces together aligning all seams. Sew together with a 1cm seam allowance leaving an opening at the base for stuffing.

Insert hobby fill stuffing into cushion cover through the opening at the base, to desired fullness. Hand sew opening closed.

Using a long doll needle, sew buttons to the center front and back of cushion to hide any inconsistent seams where all the fabric points meet.

WRAPPED LOLLY CUSHION

e EASY

WHAT YOU'LL NEED (PER CUSHION)

- 1m of 112cm wide printed Christmas cotton fabric
- Hobby fill polyester stuffing
- Scissors, Pins, Tape measure/ruler, Hand needle
- Matching sewing threads
- Sewing machine
- Iron
- **Optional** - Ribbon to tie around side of cushion

INSTRUCTIONS

Step 1 - From template provided, cut one front and one back from fabric.

Step 2 - With right sides facing, place front and back fabric pieces together. Sew together with a 1cm seam allowance leaving a 15cm gap along the base edge of cushion cover. Clip and trim all curves in seam. Turn cover right way out through the opening, press flat using iron. Press the opening seam allowance to the inside of cover.

Step 3 - To create the channels that give the lolly cushion shape, mark and pin through both layers of cover as per the markings on the template provided.

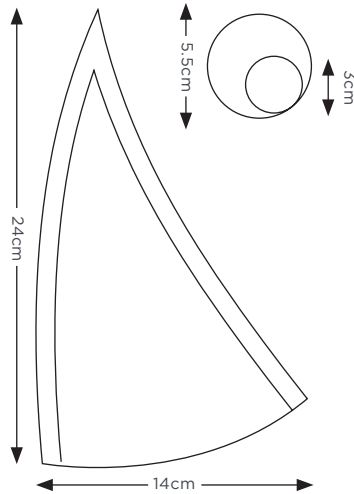
Sew along straight markings through both layers, doubling back the stitching at each end to secure stitching.

Step 4 - Insert hobby fill stuffing into cushion cover through the opening at the base, slowly working bits of hobby fill up into and around the stitching. Do not over fill close to stitching as this may add further strain to stitching.

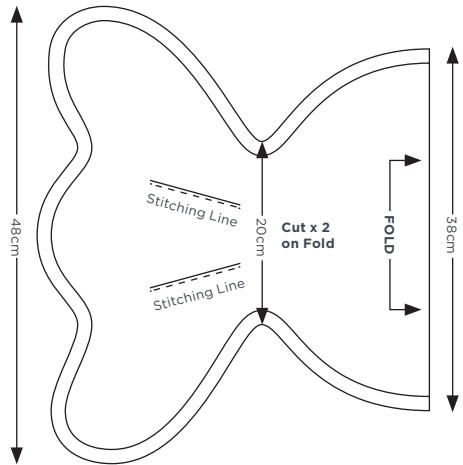
Once cushion is at desired fullness and look, hand sew opening closed.

Optional - Tie ribbon around side of cushion to give a lolly bon bon look.

TEMPLATES PEPPERMINT SWIRL CUSHION



WRAPPED LOLLY CUSHION



Note - These templates have been scaled. You will need to blow them up by 800% to make them full size. Or alternatively you can draft the pattern yourself using the measurements provided.